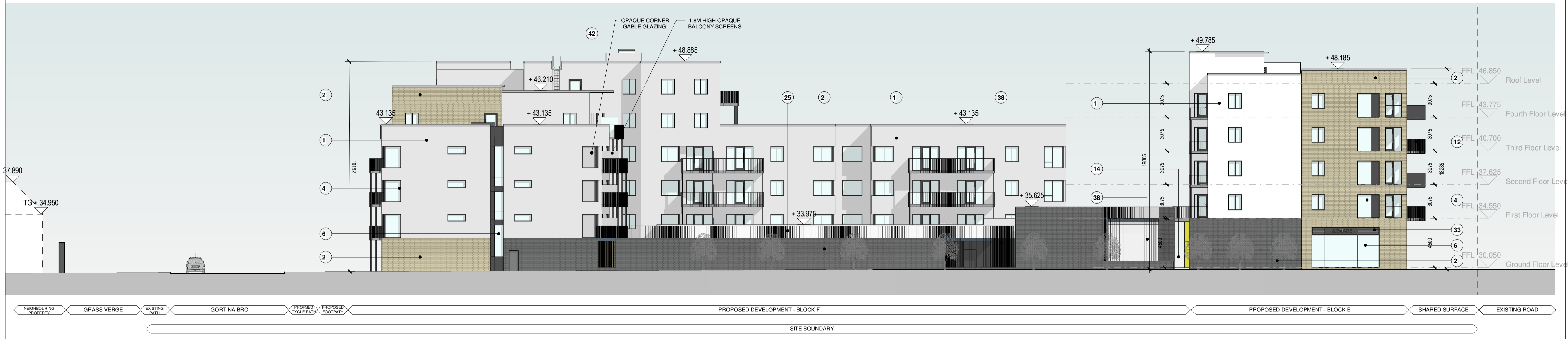


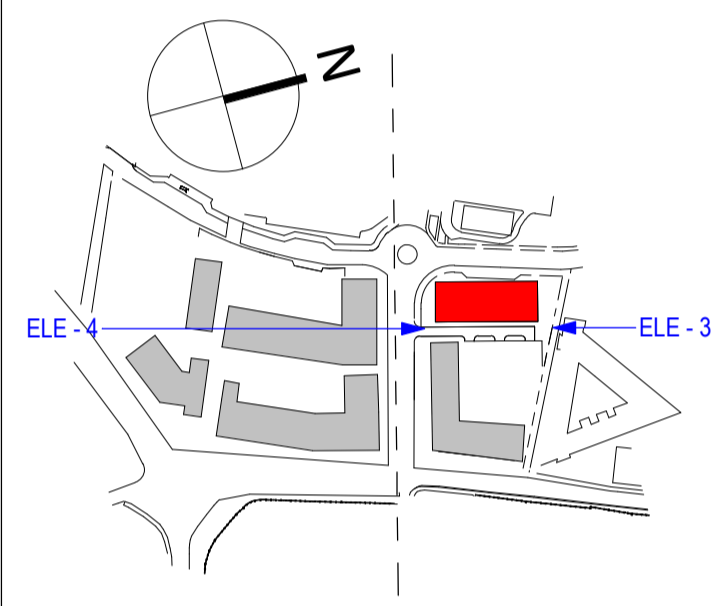
Notes:
DO NOT SCALE FROM THIS DRAWING. USE FIGURED DIMENSIONS IN ALL CASES. VERIFY DIMENSIONS ON SITE AND REPORT ANY DISCREPANCIES TO THE ARCHITECTS IMMEDIATELY. THIS DRAWING TO BE READ IN CONJUNCTION WITH THE ARCHITECTS SPECIFICATION. © THIS DRAWING IS COPYRIGHT AND MAY ONLY BE REPRODUCED WITH THE ARCHITECTS PERMISSION.

Drawing Notes:
Materials for Development

- 1 Selected Nap Render Finish.
- 2 Selected Brick Finish.
- 4 Selected Windows & Doors.
- 6 Selected Polyester Powder Coated High Performance Glazing System.
- 12 Selected Steel Railings To Balconies.
- 13 Selected Solid Balustrade To Balconies.
- 14 Access Gates.
- 16 Proposed Landscaping. Refer to Landscape Architects Drawings.
- 25 Landscaped Podium over Parking.
- 33 Service Ventilation Grills.
- 34 Retail / F+B Signage.
- 36 Selected Metal Fins/Brise-Soleil.
- 38 Selected Carpark Ventilation Grills.
- 39 Selected Development Signage.
- 41 Selected Stone Cladding.
- 42 Opaque Glass Screen.



3 BLOCK E & F - NORTH FACADE ALONG EXISTING PEDESTRIAN LINK
1 : 200



4 BLOCK E & F - SOUTH FACADE ALONG PROPOSED LINK ROAD
1 : 200



A	OCT 2019	OM	STAGE 3 APPLICATION
---	----------	----	---------------------

Rev	Date	DRN	Description
-----	------	-----	-------------

reddyarchitecture + Urbanism
Dartny Road
Dublin 6, D06 Y0E3
T: +353 (0)1 4987000
W: www.reddyarchitecture.com
E: info@reddyarchitecture.com

Client Details:
GLENVEAGH LIVING

Project Details:
KNOCKNACARRA DISTRICT CENTRE, RAHOON, GALWAY.

Drawing Title:
Block E & F Elevations 01

Job No P18-179	Date OCT 19	Scale@A1 1 : 200
Status FOR PLANNING	Drawn By: O.MORGAN	
Purpose PLANNING PERMISSION	Checked By: M.FREANEY	
Drawing Number P18179-RAU-ZZ-XX-DR-A-SLP-7209	Revision A	